

## Flow fabric data sheet

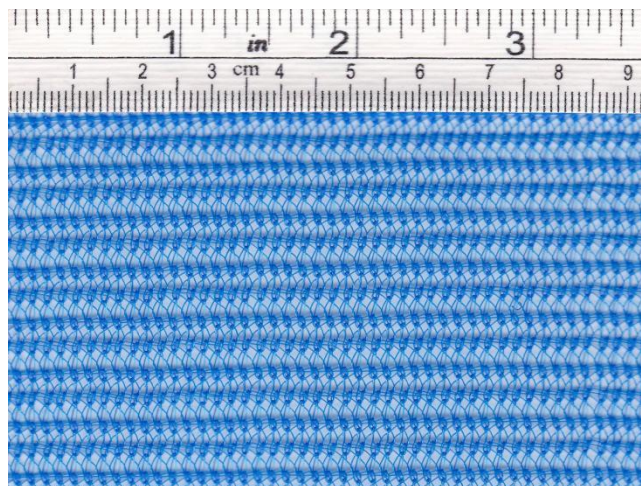
### Code # VC016

**Description:** Flow net fabric suitable for vacuum infusion process or light RTM. It allows controlled resin flow and resin front uniformity. It exhibits soft touch, (thus is safer to the vacuum bag) and high draping ability.

Properties	Unit	Value
Type of material		HDPE
Areal weight	g/m <sup>2</sup>	140 (±5%) (UNI 9402)
Thickness	mm	1.00 (±0.1 mm) (ISO 5084)
Color		Blue
Max use temperature	°C	100
Tensile strength, warp	daN	136.6 (±10%) (UNI 9405/89)
Tensile strength, weft	daN	84.3 (±10%) (UNI 9405/89)

**Usage recommendation:** To avoid amine, dust or other contamination of the application surface or cured substrate, do not remove cured peel ply and flow fabric before continuing the lamination or paintwork. For easiest peeling properties do not remove before full cure (the harder the resin system, the easier the peeling).

**Best storage recommendations:** Keep in the original packaging until use.



Note: Technical information furnished is based on current knowledge and believed to be correct. No warranties of any kind are made. All risk and liabilities arising from handling, storage and use of products, as well as compliance with applicable legal restrictions, rests with the user.

---

**SALES & ORDER PROCESSING**

28<sup>th</sup> of October St No 8A, 37300  
Agria, Greece, EU

**EU ORDERING INFO**

Tel: +30 2428092210  
Email: sales@fibermax.eu

Head office: Fibremax Ltd  
35 Grafton Way, W1T 5DB  
London, UK